

# Step by step installation guide installing a RD Session Host with RemoteFX (Part 2)

In [part 1](#) of this post we installed a Hyper-V host and a Server 2008 R2 VM on it. To be able to install and use RemoteFX it is necessary to add the Remote Desktop Session Host Role to the VM. In this post we'll do that, step by step.

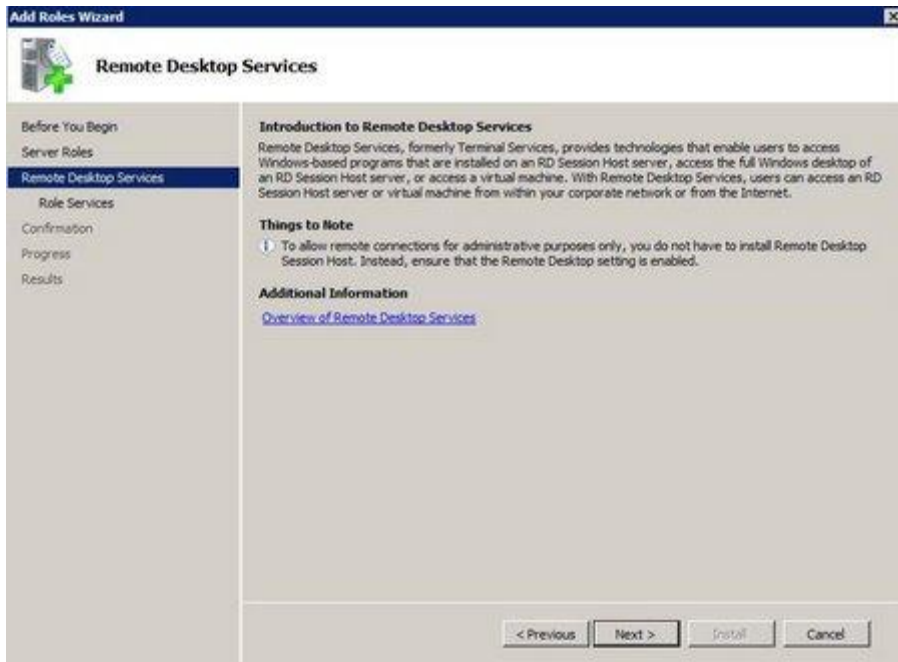
Log in to the guest VM (WINSRRDSH01 in my case) and go to start, administrative tools and click on Server Management:



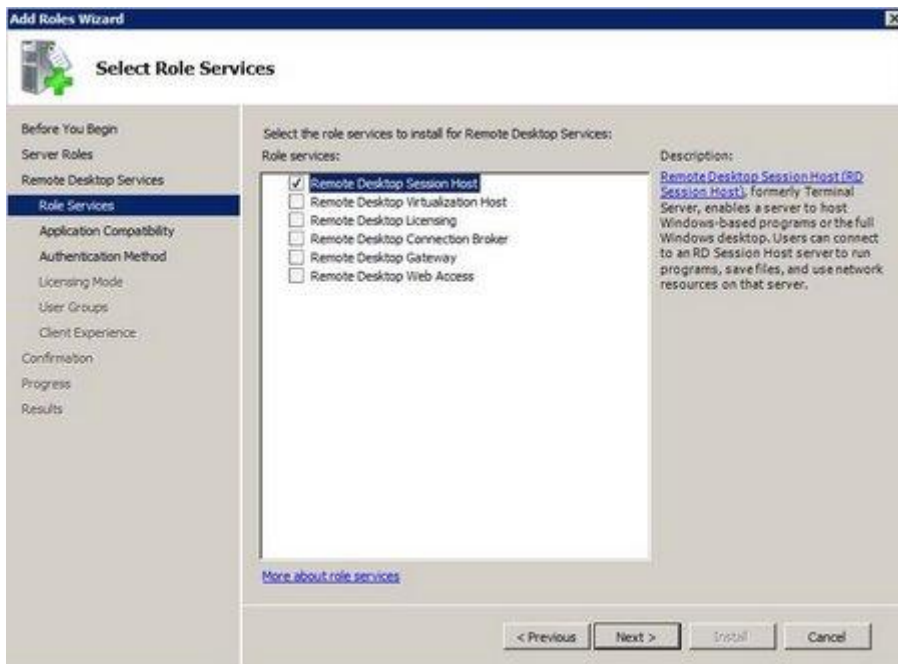
Click on Roles and on the right side on Add Roles. The Select Server Roles window will show. Select Remote Desktop Services and click Next:



The Remote Desktop Services Window shows. Click Next:



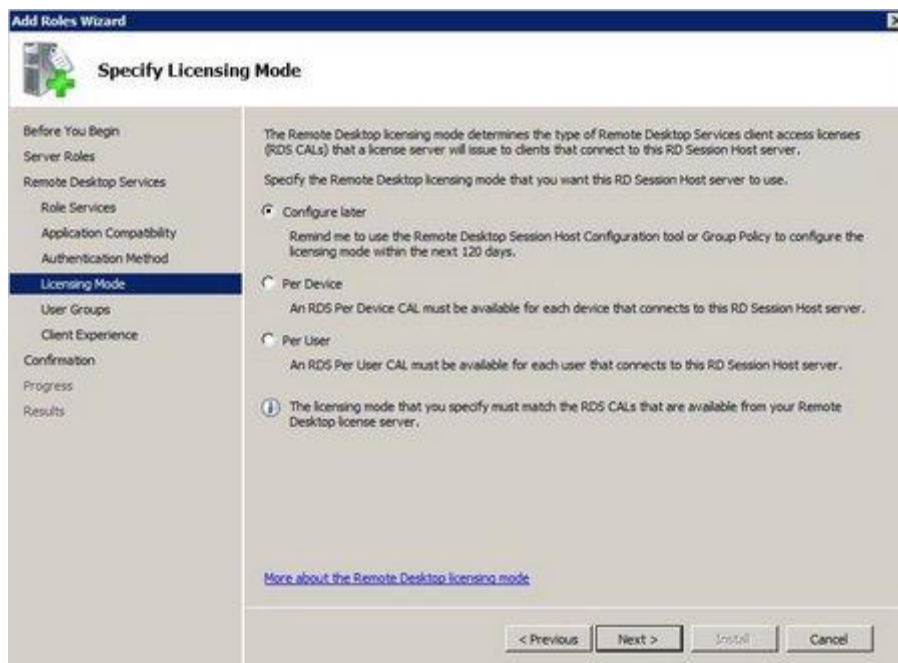
The Select Role Services Window Shows. Select Remote Desktop Session Host and click Next:



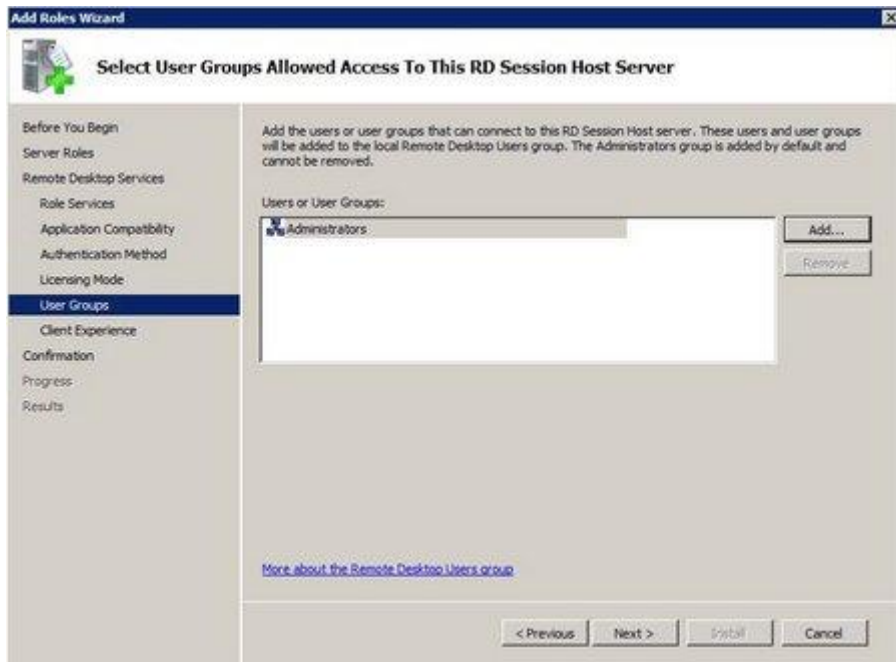
The authentication Method for RDSH will show. select Do not ... (you can change this if you want) and click Next:



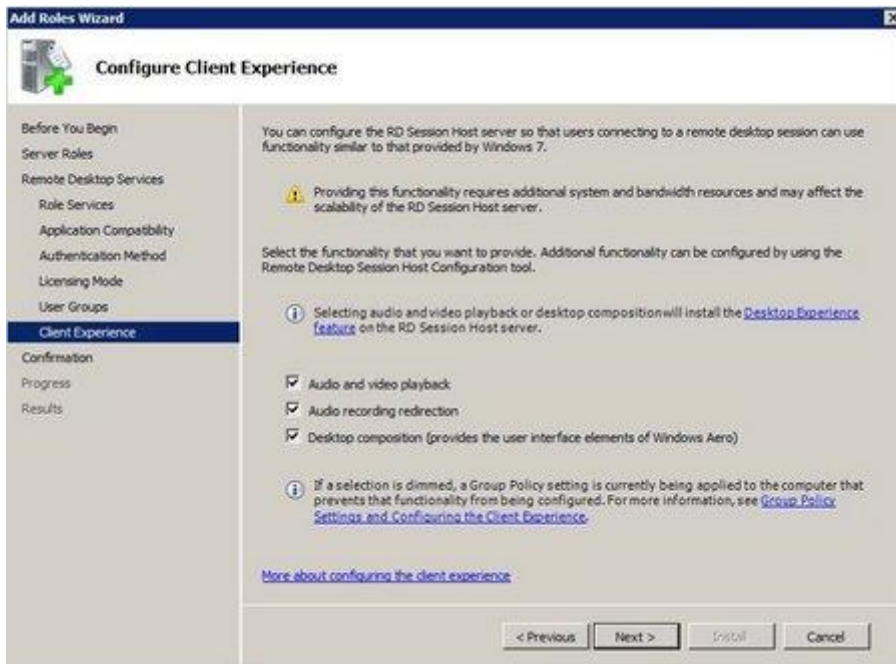
The Specify Licensing Mode window will show. Select Configure Later and click Next:



The Select User Groups Allowed Access to this RDSH server window will show. click Next and leave Administrators as default:



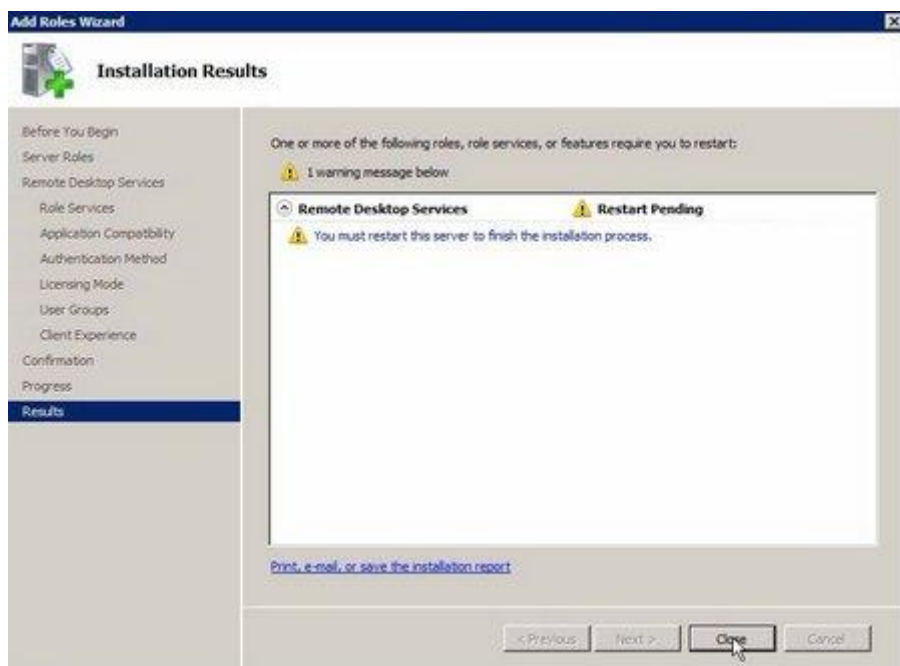
The Configure Client Experience window will show. Select all three options and click Next:



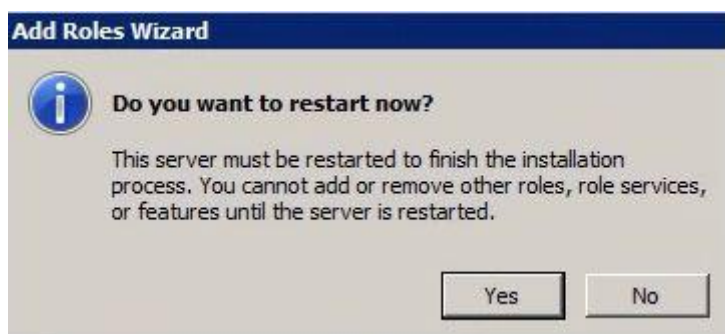
The Confirm Installation Selections window will show. Click Install.



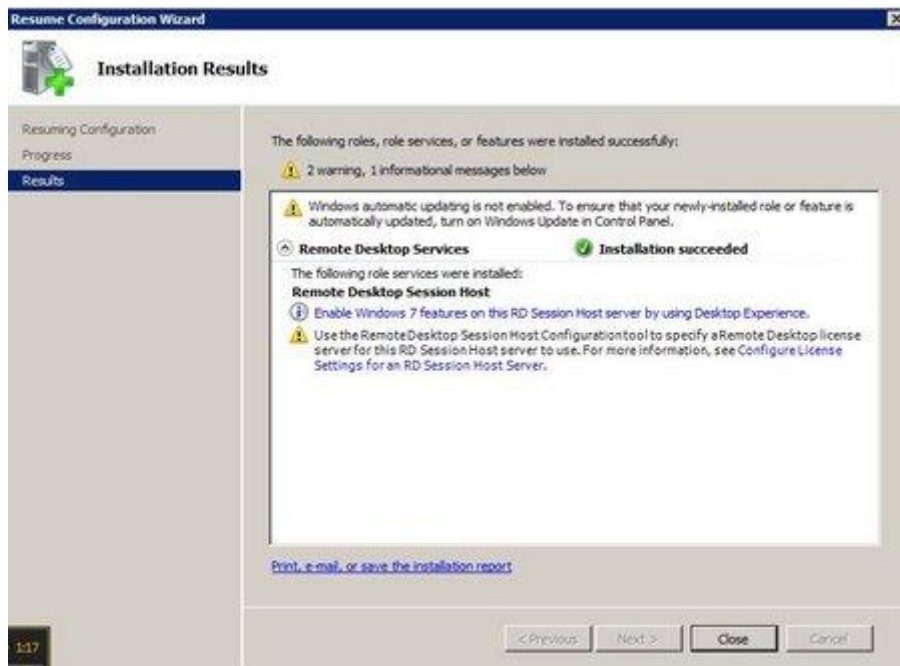
After installation the installation results window will show. Click Close



And click Yes to reboot the server:



After the reboot log on to the server, and let the installation do it's final thing. The last window will show. Click Close:



This is the end of part 2. We've now installed the Hyper-V server role, and a Guest VM running Server 2008 R2 SP1 with the Remote Desktop Session Host Role installed.

In the [Part 3](#) of this post we'll finally go to configure RemoteFX.